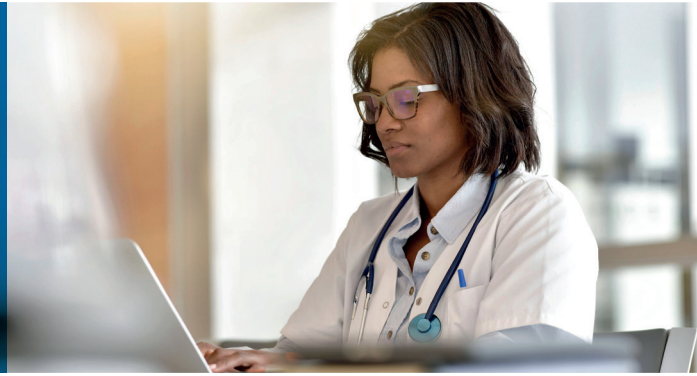


# Virtual GP access for the whole family with GP24



Through your MetLife individual protection policy, you and your loved ones can access GP24, provided by HealthHero.

HealthHero is Europe's leading digital-first health service provider. GP24 is available 24-hours a day, 7 days a week, every day of the year, which means you receive unlimited advice, reassurance – and where appropriate – diagnosis from wherever you are in the world. You can choose a time and day that suits you, whether to have a video or phone appointment, and to speak to a male or female doctor if you have a preference. And you can book online in minutes.

## Get started today and share the benefits with your family:

- Visit: <https://metlife.gp-24.com>
- Follow the on screen prompts to set up your account and enter this activation code: **MLGP24**
- An email confirmation will be generated within 24hrs; please ensure you follow the instructions in this email
- Log in to your account via <https://metlife.gp-24.com>
- Or call to book an appointment: **0330 043 5198**

### Easy access:

- Unlimited access to practising GPs
- Book online in minutes using the web app
- Choose a time of day that suits you
- Available wherever you are in the world

### Services available:

- Phone or video consultations
- Translation service in more than 200 languages
- Private prescriptions available, with delivery to any UK pharmacy or private address
- Specialist referrals where appropriate
- Access to online symptom checker
- Second medical opinion service available

Please see HealthHero website for full details of the service.

GP24 Services do not form part of the insurance policy and can be amended and/or withdrawn at any time. Insurance premiums are unaffected by the provision of these services and there will be no difference in the cost of the premiums should a client decide not to take up these services.

Products and services are offered by MetLife Europe d.a.c. which is an affiliate of MetLife, Inc. and operates under the "MetLife" brand.

MetLife Europe d.a.c. is a private company limited by shares and is registered in Ireland under company number 415123. Registered office at 20 on Hatch, Lower Hatch Street, Dublin 2, Ireland. UK branch office at Invicta House, Trafalgar Place, Brighton BN1 4FR. Branch registration number: BR008866. MetLife Europe d.a.c. (trading as MetLife) is authorised and regulated by Central Bank of Ireland. Deemed authorised by the Prudential Regulation Authority. Subject to regulation by the Financial Conduct Authority and limited regulation by the Prudential Regulation Authority. Details of the Temporary Permissions Regime, which allows EEA-based firms to operate in the UK for a limited period while seeking full authorisation, are available on the Financial Conduct Authority's website.