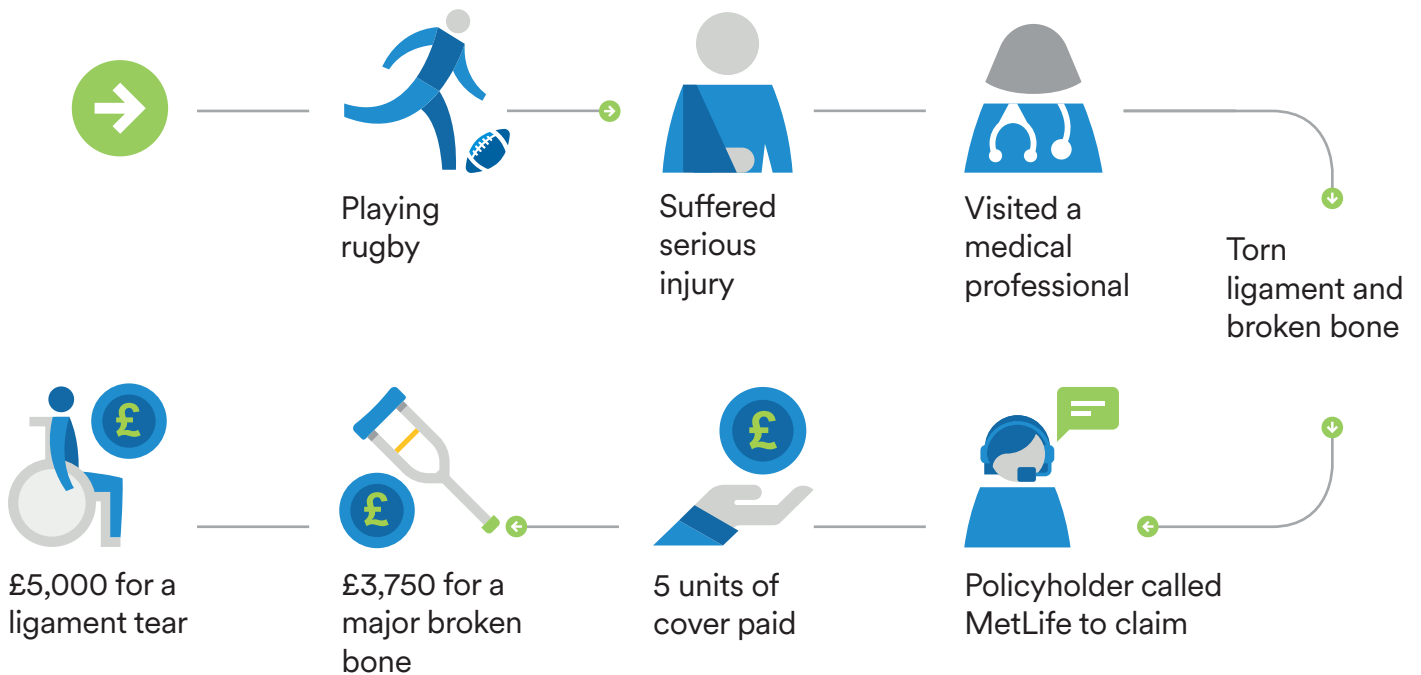


# Protection for sports injuries

Learn how Mr T. received £8,750 when he when he tore a knee joint ligament and fractured his shin bone.

**An example of how Active Lifestyle Cover can help with day to day life:**

## Active Lifestyle Claim



Over **11,000,000**  
play football in the UK\*

Source: The FA 2015 \*Professional sports injuries are excluded from cover

Call us to find out more on **0800 917 0100**  
or visit **[www.metlife.co.uk/multiprotect](http://www.metlife.co.uk/multiprotect)**

Please note: Customer names have been anonymised in this real life MetLife case study. Exclusions apply, please refer to full policy terms and conditions.

Products and services are offered by MetLife Europe d.a.c. which is an affiliate of MetLife, Inc. and operates under the "MetLife" brand.

MetLife Europe d.a.c. is a private company limited by shares and is registered in Ireland under company number 415123. Registered office at 20 on Hatch, Lower Hatch Street, Dublin 2, Ireland. UK branch office at One Canada Square, Canary Wharf, London E14 5AA. Branch registration number: BR008866. MetLife Europe d.a.c. (trading as MetLife) is authorised and regulated by Central Bank of Ireland. Deemed authorised by the Prudential Regulation Authority. Subject to regulation by the Financial Conduct Authority and limited regulation by the Prudential Regulation Authority. Details of the Temporary Permissions Regime, which allows EEA-based firms to operate in the UK for a limited period while seeking full authorisation, are available on the Financial Conduct Authority's website.