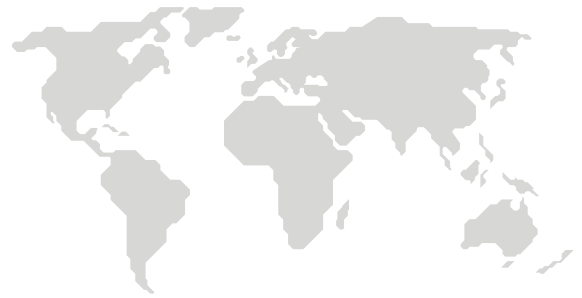


# MetLife MultiProtect

## Live the life you love

MultiProtect gives you the confidence to live the life you love. It provides financial support for you 24/7 worldwide, covering a range of injuries from broken bones to those that could have significant impact on your life. All it takes is three simple steps.

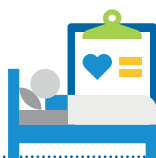


### Step 1 – It starts with Core Cover

MultiProtect automatically includes the following benefits, with a monthly premium from **£8 to £40**.



**Broken bones**  
benefit payment up to **£3,750** per Broken Bone, even if you break more than one



**UK hospital stays**  
benefit payment is up to **£250** per 24-hour period you're admitted to a UK hospital due to an accident or sickness (sickness is covered once you've had your policy for 12 months)



**Funeral benefit**  
payment increases year on year with up to **£10,000** if you die as a result of natural causes



**Accidental permanent injury**  
covers a wide range of life-changing injuries up to **£250,000**



**Total permanent disability**  
cover up to **£250,000**



**Accidental death**  
should the worst happen, MultiProtect provides cover for up to **£200,000**

### Step 2 – Optional Cover

MultiProtect provides three additional cover options starting from just **£1 per month**.



**Child Cover**  
offers a wide range of benefits including Broken Bones, Hospitalisation and children's cancer cover. It provides protection for children aged 6 months to 18 years or up to 23 years if your child is in full-time education. Children do not need to live with the policyholder.



**Active Lifestyle Cover**  
provides additional cover for accidental injuries such as ligament tears, tendon ruptures and dislocations, so you can keep enjoying the activities you love.



**Healthcare Cover**  
is tailored for those who may be at particular risk of contracting certain illnesses, such as those who work in the healthcare sector.

## Step 3 – Choose your level of protection

MultiProtect is an affordable protection plan that can be tailored to suit your needs. There are five levels of cover; choose between one and five units. The more units you buy the higher the benefits will be.

More units = higher level of benefits

	1 Unit	2 Units	3 Units	4 Units	5 Units
<b>Core Cover</b>	£8 per month	£16 per month	£24 per month	£32 per month	£40 per month
<b>Child Cover</b>	+£1 per month	+£2 per month	+£3 per month	+£4 per month	+£5 per month
<b>Active Lifestyle Cover</b>	+£1 per month	+£2 per month	+£3 per month	+£4 per month	+£5 per month
<b>Healthcare Cover</b>	+£1 per month	+£2 per month	+£3 per month	+£4 per month	+£5 per month

**!** For full benefits and exclusions please ensure you read the Policy Summary and Additional Information Summary found on [www.metlife.co.uk/customer/protection](http://www.metlife.co.uk/customer/protection)

## Wellbeing support centre

You will also receive free and unlimited access to our telephone wellbeing support centre, provided by Health Assured, a leading wellbeing assistance provider in the UK.

The services cover three core areas. You can get help with financial, mental and physical wellbeing. Full details will be sent in your welcome pack.

## About MetLife

As one of the world's leading insurance providers, MetLife, Inc. has built a reputation for being financially strong, stable and trustworthy. We've been around for over 150 years and have over 100 million customers worldwide.

### How does MetLife, Inc. compare?

Company	Assets (\$bn)
MetLife, Inc.	692.5
Legal & General Group	621.2
Aegon	425.4
Aviva PLC	533.3
Zurich Insurance Group	374.1
Standard Life	326.03

\* Source: Forbes - Global 2000 leading companies, values calculated January 2019 [www.forbes.com](http://www.forbes.com)



MetLife operate in **40+** countries

Source: MetLife protection portfolio 2019



MetLife Inc. has been in operation for **150** years  
We were the first life company to pay a claim on the sinking of the Titanic.



In the UK in 2019, we paid out **14,730** protection claims



This totalled **£11.1m** of claims paid

**0800 917 0100**

**metlife.co.uk/multiprotect**

Products and services are offered by MetLife Europe d.a.c. which is an affiliate of MetLife, Inc. and operates under the "MetLife" brand.

MetLife Europe d.a.c. is a private company limited by shares and is registered in Ireland under company number 415123. Registered office at 20 on Hatch, Lower Hatch Street, Dublin 2, Ireland. UK branch office at One Canada Square, Canary Wharf, London E14 5AA. Branch registration number: BR008866. MetLife Europe d.a.c. (trading as MetLife) is authorised by the Central Bank of Ireland and subject to limited regulation by the Financial Conduct Authority and Prudential Regulation Authority. Details about the extent of our regulation by the Financial Conduct Authority and Prudential Regulation Authority are available from us on request. [www.metlife.co.uk](http://www.metlife.co.uk)

